



Getting to Chicago Shakespeare Theatre Social Story Spring 2023

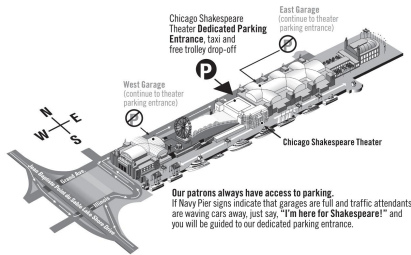
A.B.L.E. – Artists Breaking Limits & Expectations
PO Box #147069, Chicago IL 60614
www.ableensemble.com

admin@ableensemble.com



I am going to A.B.L.E.'s production of *A Midsummer Night's Dream*.

The performance will be at Chicago Shakespeare Theater. It is located at 800 E. Grand Ave, Chicago, IL, 60611.



There are many different ways to get to Chicago Shakespeare Theatre.



This social story will help answer questions about how to get to Chicago Shakespeare Theatre.



If I have questions, or if I need help, I can contact A.B.L.E.'s Program Manager, Beth.

I can email Beth at beth@ableensemble.com

I can call or text Beth at 773.234.8879

Getting to Navy Pier

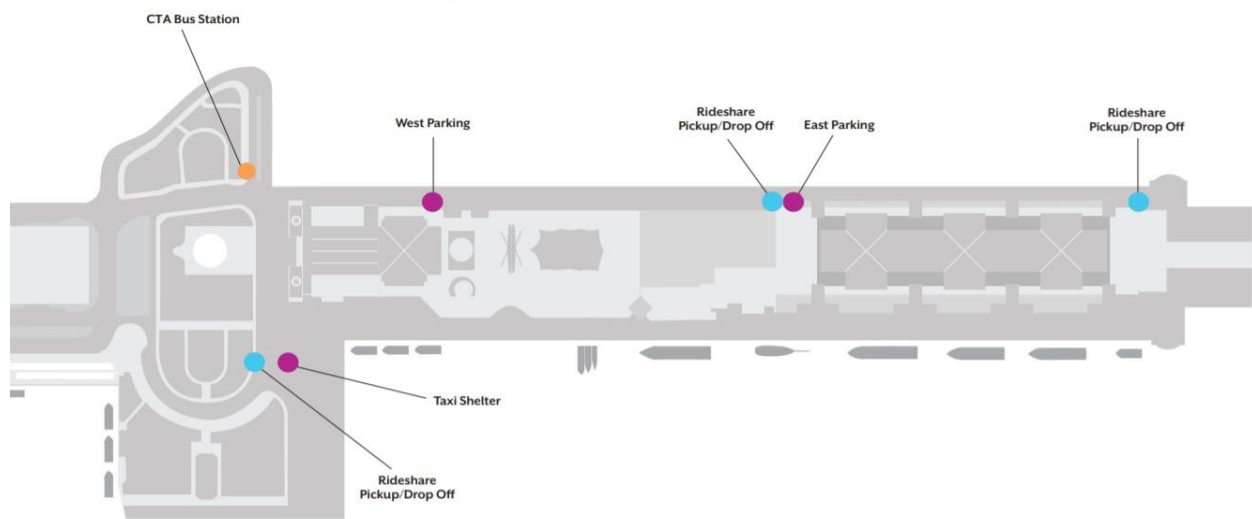


There are many different ways to get to Navy Pier.

I could drive, take a Taxi or RideShare.

I could park in the Garage.

Or I could take Public Transportation.

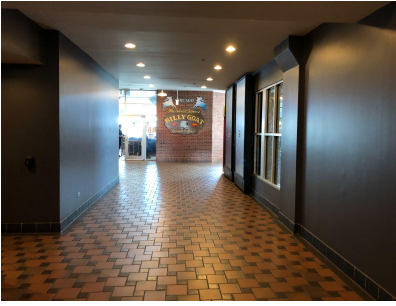


If I am getting dropped off



If I am being **dropped off**, or if I am **taking a Taxi, Lyft, or Uber** to the theater, I should go to the **Pick Up/Drop Off** area on the **North Side of the Pier**.

It is about halfway down the Pier near **Entrance 1**.



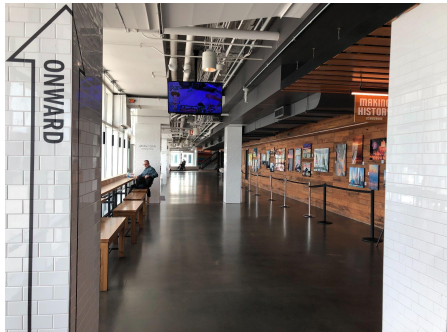
I can enter through the doors and follow the hallway towards the Billy Goat Tavern.

Then I will turn **RIGHT**.

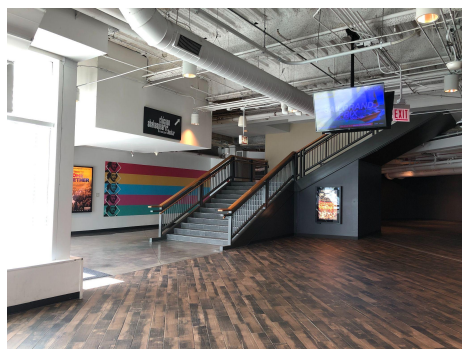


I will walk past the Amazing Maze and other sights.

Then I will follow the hallway to the **LEFT**.



I should continue down the hallway. There will be windows on my Left and stores on my right.



I will see the staircase to get to the second floor.



I could also take the elevators up to the **SECOND FLOOR**.

If I am parking at the Pier



Navy Pier has two parking garages on site.

The best place to park is in the **West Garage at Navy Pier.**

The entrance is on the North side of Navy Pier.

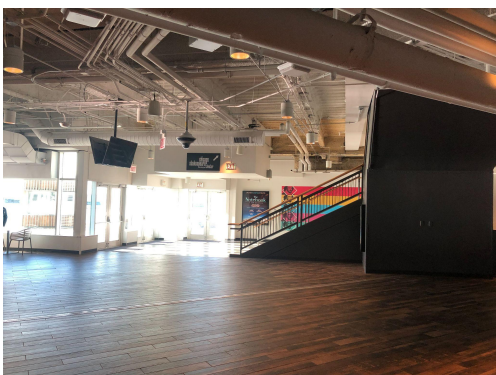


With validation, the rate at the Navy Pier garage is **\$21 for up to 6 hours.**



Door 5 is the closest door to the theater.

This is Door 5 on the lower level.



If I park on the lower level, when I enter through the doors to Navy Pier, I **should look for the staircase or elevators to get to the second floor and the theatre lobby.**



Door 5 on Level 2 is the closest entrance to the theatre.

I can drive up to this level in the parking garage.



This door will lead me right to the theatre box office without needing to take any stairs or elevators.



Free parking isn't available in the area, but there are a few budget-friendly options.

I can get a Navy Pier parking discount in four garages in the neighborhood. I can visit the Pier Guest Services Desk to request validation. Here are some nearby options:

- **Ogden Plaza Self Park**, 300 E. North Water St. (\$15)
- **Cityfront Place Parking Garage**, 400 N. McClurg Ct. (\$15)
- **Grand Plaza Park**, 540 N. State St. (\$15)

If I am arriving via CTA



I could take the CTA to get to Chicago Shakespeare Theatre.

The nearest El station is the **Grand Red Line**. I can then transfer to a bus to get to the theatre.



The nearest buses close to the Grand Red Line stop are:

- **#65 Grand bus**
- **#66 Chicago bus**
- **#29 State bus**

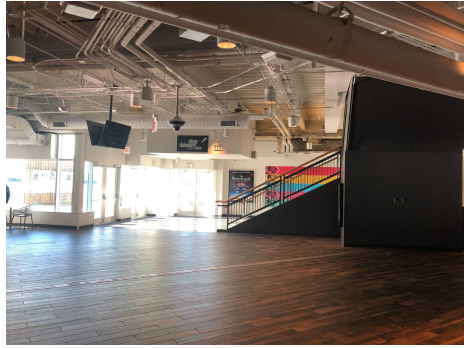
These buses will drop me off at the bus terminal at Navy Pier.



From the bus terminal I will go to the front of Navy Pier.

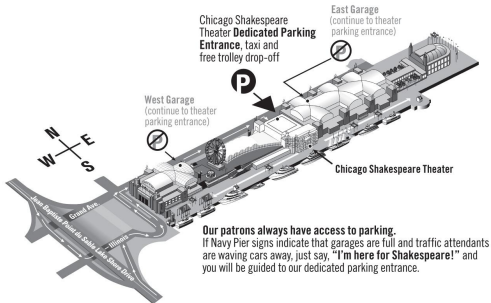


I can use the **Pedestrian Pathway along the South side of Navy Pier** until I see the Chicago Shakespeare Theatre sign!



When I enter on the lower level, I should look for the staircase or elevators to get to the second floor.

If I have more transportation questions



If I have more question about transportation, I can check the Parking and Directions page on Chicago Shakespeare Theater's website. The link is:
https://www.chicagoshakes.com/your_visit/parking_and_directions

Arriving at Chicago Shakespeare Theater



The main lobby doors at Chicago Shakespeare Theater look like this.

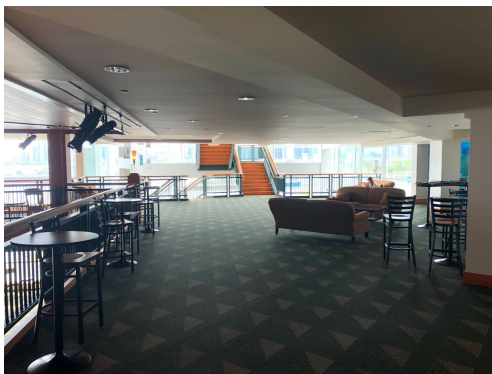
Someone from A.B.L.E. will be stationed by the doors to welcome me.



I can turn RIGHT to get my tickets from the Box Office.



Then I can continue past the box office to take the stairs, or I can turn around to take the elevator to get to my event.



If I am taking part in the pre-show workshop, I should go to the 2nd Floor Dress Circle.



The performance is happening in the Upstairs Theater on the 6th floor.



There will be signs and people from A.B.L.E. available to answer my questions and point me in the right direction!