



8 stories.

16 mythical creatures.

70 performers.

## Part 1

Friday January 21st 7pm CT  
Saturday January 22nd 11am CT

## Part 2

Saturday January 22nd 7pm CT  
Sunday January 23rd 3pm CT

# DIRECTOR'S NOTE

**Thank you for tuning in to watch *The Forms of Things Unknown*.**

Over the past 2 years, you've probably faced your fair share of things unknown. Our ensembles certainly have. We've been battling unstable internet signals, tight living quarters, personal losses, Zoom fatigue, and general uncertainty.

At A.B.L.E., we've always seen creating our own stories as a way to process emotions and to learn more about ourselves and each other. We especially need that now. **We can't control what is happening in the world around us, but we can control what happens in these imaginary worlds that we create together.**

Our ensembles collaborated to create 8 original stories for *The Forms of Things Unknown*. We meet unfamiliar creatures like a Simurgh, a Wendigo, a Minotaur, and a Kelpie. But through these mythical creatures, we explored familiar themes like making new friends, asking for help, loving our differences, persisting against the odds, and working together. We get to reveal pieces of our hearts and minds along the way. I think you'll find pieces of yourself in these stories too.

**If you set down to write a story by yourself, it can feel daunting. But when you have a community - people to share your ideas with, to make you laugh, and to cheer you on - the way becomes much clearer. We can't get through these things unknown alone. We need each other to light the way.**

Thank you for keeping our fires burning, and helping us to continue to do all we are A.B.L.E. to do.

**-Katie Yohe, A.B.L.E. Founder & Executive Artistic Director**

## LAND ACKNOWLEDGMENT

This semester, A.B.L.E.'s actors, volunteers, and staff have connected from all across Turtle Island, the Indigenous term for the North American continent. A.B.L.E. is based in Chicago, on the ancestral homeland of the Council of the Three Fires: the Ojibwe, Odawa, and Potawatomi Nations. Many other tribes such as the Miami, Ho-Chunk, Menominee, Sac, and Fox also called this area home and nurtured a culture of creativity and storytelling long before us.

A.B.L.E. champions the right to agency and self-determination - rights that have been denied to Indigenous People. In the spirit of inclusion, we encourage you to take a moment and find out whose Native Land you are watching from. Let us know what you learn: <https://native-land.ca>

# THE FORMS OF THINGS UNKNOWN

## **Creative Team**

### **EXECUTIVE ARTISTIC DIRECTOR**

Katie Yohe

### **PROGRAM COORDINATOR**

Emma MacLean

### **VIDEO EDITING, SOUND EDITING, AND SPECIAL EFFECTS**

Brock Alter

Alex Sokol

### **VIDEO AND AUDIO ELEMENTS LICENSED BY**

Adobe Elements & Envato Elements

### **BOARD OF DIRECTORS**

Nancy Buchanan

Jenny Fisher

Marcela Sarmiento

Greg Desmond

Joe Marren

Kendra Van Kempen

Dennis Rossow

### **SPECIAL THANKS**

Anchorfish Printing

The Menomonee Club Drucker Center

Jon Hansen

Zoom

and

The Families of the A.B.L.E. Ensembles

**The Forms of Things Unknown was partially supported by grants from**



PAUL M. ANGELL  
FAMILY FOUNDATION



# SUNDAY ENSEMBLE

## ACTORS



Colleen  
Altman



Jack  
Butler



Benjamin  
Collins



Matthew  
Danaher



Peter  
Grzeslo



Andrew  
Kosnik



Christian  
Kroski



Emily  
Kwidzinski



Matt  
La Chapelle



Sam  
Radinsky

## FACILITATORS



Nette  
Angelini



Amy  
Bahr



Maryann  
Carlson



Claire  
Chrzan



Megan  
Gray



Erica  
Johnson



Beth  
Sherwood

## TEACHING ARTISTS



Kaylie  
Honkala



Katie  
Yohe





# MONDAY A ENSEMBLE

## ACTORS



Rachel  
Buchanan



Martin  
Conway



Alena  
Counter Brown



Ryan  
Foley



Fletcher  
Jones



Emily  
Lavin



Anna  
Luzadder



Maggie  
Marren



Matthew  
Marren



Jake  
Solworth

## FACILITATORS



Shannon  
Diegel



Perry  
Hunt



Bill  
Larkin



Kate  
McDuffie



Julianne  
Shea



Susan  
Sjodin



Rachel  
Walker

## TEACHING ARTISTS



Lawrence  
Kern



Emma  
MacLean



# MONDAY B ENSEMBLE

## ACTORS



Eli  
Alvarez



Marissa  
Bloodgood



Christian  
Boyd



Sandia  
Coleman



Sophie  
Earvolino



Emmett  
Fox



Natalia  
Janik



Mila  
Medina



Lucas  
Miezal

## FACILITATORS



Mary  
Feigenbutz



Chelsea  
Hosler



Peyton  
Leonard



Camila  
Restrepo



Maddie  
Rostami



Shaina  
Schrooten



Polly  
Yukevich

## TEACHING ARTISTS



Braden  
Cleary



Kieran  
Hartnett





# TUESDAY ENSEMBLE

## ACTORS



Colin  
Baar



Samuel  
Floersheimer



Veronica  
Krol



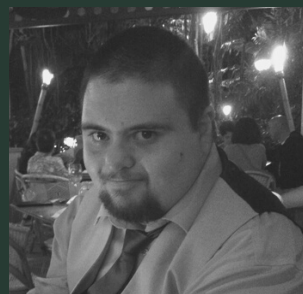
Claire  
O'Leary



Justice  
Peters-Farrell



Sam  
Petri



Dan  
Takushi

## FACILITATORS



Chloe  
Belongilot



Kara  
Davidson



Lauren  
Lynch



Lindsay  
Stock



Ben  
Raanan

## TEACHING ARTISTS



Arin  
Mulvaney



Sean  
Okerberg



# THE STORIES

## Part 1

Run Time: 60 minutes



Gather around the campfire with storytellers Bill, Perry, Julianne, Kate, and Emma to hear the tale of an Imp (Ryan) and a Kelpie (Alena) who make friends playing on the shores of Fire Lake. They soon realize that the waters of the lake are making all the creatures sick, even Devil Wizardlock the Imp (Martin). The friends set off on a journey to try to heal the waters of Fire Lake but are met with obstacles including a Bird who can't take anything seriously (Matt M) and an evil map (Emily L). **Will they find the answers they seek?**



When campers Maryann, Claire, Emily K, and Christian get lost in the woods, they recall the haunting story of a forbidden love between a Fairy (Colleen) and Centaur (Matt L.). Though it was love at first sight, the judgmental citizens of Hocus Pocus Woods (Amy, Kaylie, and Nette) make it clear they do not approve. The Fairy and Centaur leave their home in search of a place where they can be accepted. They meet a pair of magical outcasts (Peter and Sam) who reveal there might be a way...but **will they have the courage to stay together?**



A sudden rainstorm sends campers Matt D, Jack, Erica, and Megan into a dark cave with a pool of water in the center. Matt and Jack recognize it instantly as a Taniwha cave and settle in to share the story of a gregarious Taniwha (Ben). When the Taniwha gets lost in a land far from home, he begs a skeptical Simurgh (Andrew) for help. The two set off on an epic journey through sky and ocean (with fish puppets by Beth and Katie). **But where exactly is home?**



Storytellers Anna, Maggie, and Shannon lead us through the wild tale of a Thunderbird (Rachel B) who fears the strength of her fire powers. She enlists the help of her ex - the Sphinx (Jake) to hunt down the mythical Dragon's Eye which might be the key to harnessing her powers. They journey across oceans to challenge the evil mastermind Max the Great (Fletcher) and his mini-bosses (Susan and Rachel W) in a video game. **Can they work together to find their true strength and rekindle a fiery romance?**

# THE STORIES

## Part 2

Run Time: 53 minutes



A group of campers (Peyton, Polly, Camila, Maddie and Kiaran) hear a strange bird call in the woods. This launches them into the tale of a young Phoenix named Brontes (Lucas) who meets a brave Minotaur named Rocky (Eli). Their first date goes south when they realize they are both aiming to win The Triolympic Games. Their competition drives them to train harder than ever and Brontes gets hurt, badly. This sets him on a journey of self discovery aided by his Papi (Emmett), a ferocious lion (Natalia), and the Phoenix Queen (Mila).

**Can he heal in time to win the gold?**



Friends Mary, Shaina, Chelsea and Marissa find a strange artifact while camping on the island of Kiel - a fossilized pie crust. The legends say that a funny Selkie named Rainbow (Sandia) and her best friend Ariana the Nymph (Christian B) used to love eating and performing at the pie cave...until a swarm of rat fairies took over Kiel. When the mermaids and magical turtles (Sophie) of the island can't defeat the Rat Fairies, Rainbow and Ariana take matters into their own hands and make a desperate plea to the Woodland Spirits to construct a trap like you've never seen before. **Will it be enough to save the island?**



Gather around the campfire with storytellers Lauren, Ben, and Lindsay to hear the tale of a hungry Wendigo (Dan). He wakes one morning to find a curious and adventurous Sprite (Claire) sneaking through his cave and instantly threatens to eat her. But the Sprite promises to bring him to something even tastier. They just have to travel the rapids of the Windy Raft River, where surprises wait around every bend.

**Can they reach their destination before the Wendigo's hunger gets the best of him?**



Grab your guitar and join storytellers Justice, Chloe, and Kara for the story of how the world's most famous band came together. A handsome Griffin (Colin), a boxing Werewolf (Sam P), and a beautiful Princess (Veronica) meet as contestants at a music contest. But their search for fame and fortune takes a nasty turn. Soon they find themselves facing down a nefarious Vampire (Samuel) and spooky spirits (Sean).

**Can they raise their voices and find true harmony?**

# OUR PROCESS

Whether onstage or online, there are a few core beliefs that shape how we work:

## WE BELIEVE EVERYONE IS A.B.L.E.

There are no "stars" in an A.B.L.E. production. After several weeks creating our stories together, actors met with teaching artists to share their personal preferences. Which story or characters were they drawn to? Did they want to do a scene or a monologue? What special skills did they want to show off? Actors were cast based on their preferences, and then spent 3 weeks customizing their part by writing additional dialogue, creating songs and movement pieces, and adding content that would showcase their strengths and personalities to the fullest.

## WE BELIEVE PERFORMING SHOULD BE FUN

Rather than pressuring actors to memorize lines, each actor paired with a facilitator to drop them in during their filming session. Our facilitators ensure actors can focus on connecting with the emotions of their scene, without stressing about what to say next.

## WE BELIEVE IN TEAMWORK

At the beginning of every rehearsal, we emphasize our responsibilities as an ensemble (listen, focus, be respectful, try your best, and have fun!), and remember that we have to work together and support each other to create a project. We built the stories in a collaborative process, ensuring that each actor had a part in imagining the characters, settings, and plot of their ensembles' stories. While devising, we practice saying "YES, AND!" This means we accept each other's ideas, and build on. The end result are stories that belong to all of us.

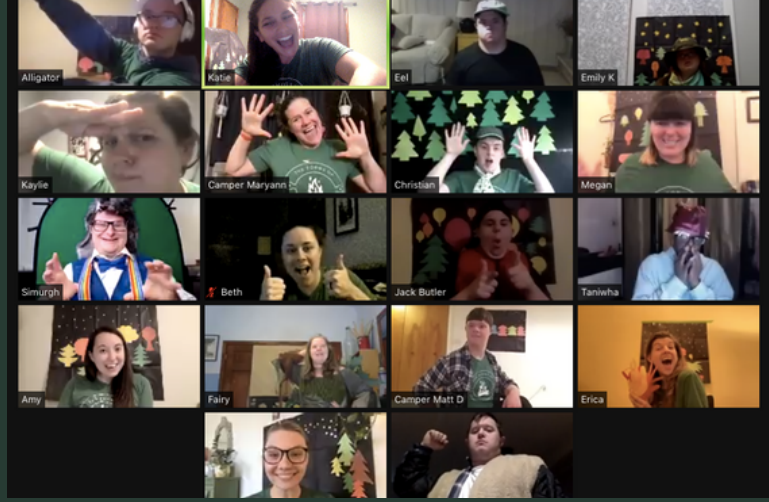
**Thank you for watching!**

Will you help us create more projects with a tax-deductible donation?

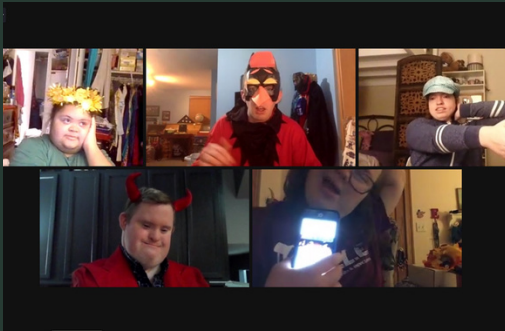
Learn more at:

**[bit.ly/giveABLE](https://bit.ly/giveABLE) or text "THINGSUNKNOWN" to 44-321**













**A.B.L.E.**

artists breaking limits & expectations

We believe everyone is A.B.L.E. to connect, to contribute, and to create. We are A.B.L.E. - Artists Breaking Limits and Expectations. Our mission is to provide performing arts opportunities through which individuals with intellectual and developmental disabilities can share who they are and all they are A.B.L.E. to do. Through our core ensembles, specialized workshops, and outreach programming, A.B.L.E.'s actors strengthen lifelong skills including communication, focus, creativity, and teamwork. A.B.L.E.'s ensembles have staged plays ranging from original works to Shakespearean classics, and award-winning feature films. By placing participants with disabilities in the spotlight, and giving them ownership over their experiences, A.B.L.E.'s work strives to shift societal preconceptions, and build more inclusive, empathetic communities.

## Connect with A.B.L.E.



[ableensemble.com](http://ableensemble.com)



[admin@ableensemble.com](mailto:admin@ableensemble.com)



[/ableensemble](https://www.facebook.com/ableensemble)



[@ableensemble](https://www.instagram.com/ableensemble)



[bit.ly/abletube](https://bit.ly/abletube)



[bit.ly/ablevimeo](https://bit.ly/ablevimeo)

A.B.L.E. Artists Breaking Limits & Expectations - P.O. Box #147069, Chicago IL 60614

*A.B.L.E. is a registered 501(c)3 nonprofit EIN 81-2667531*